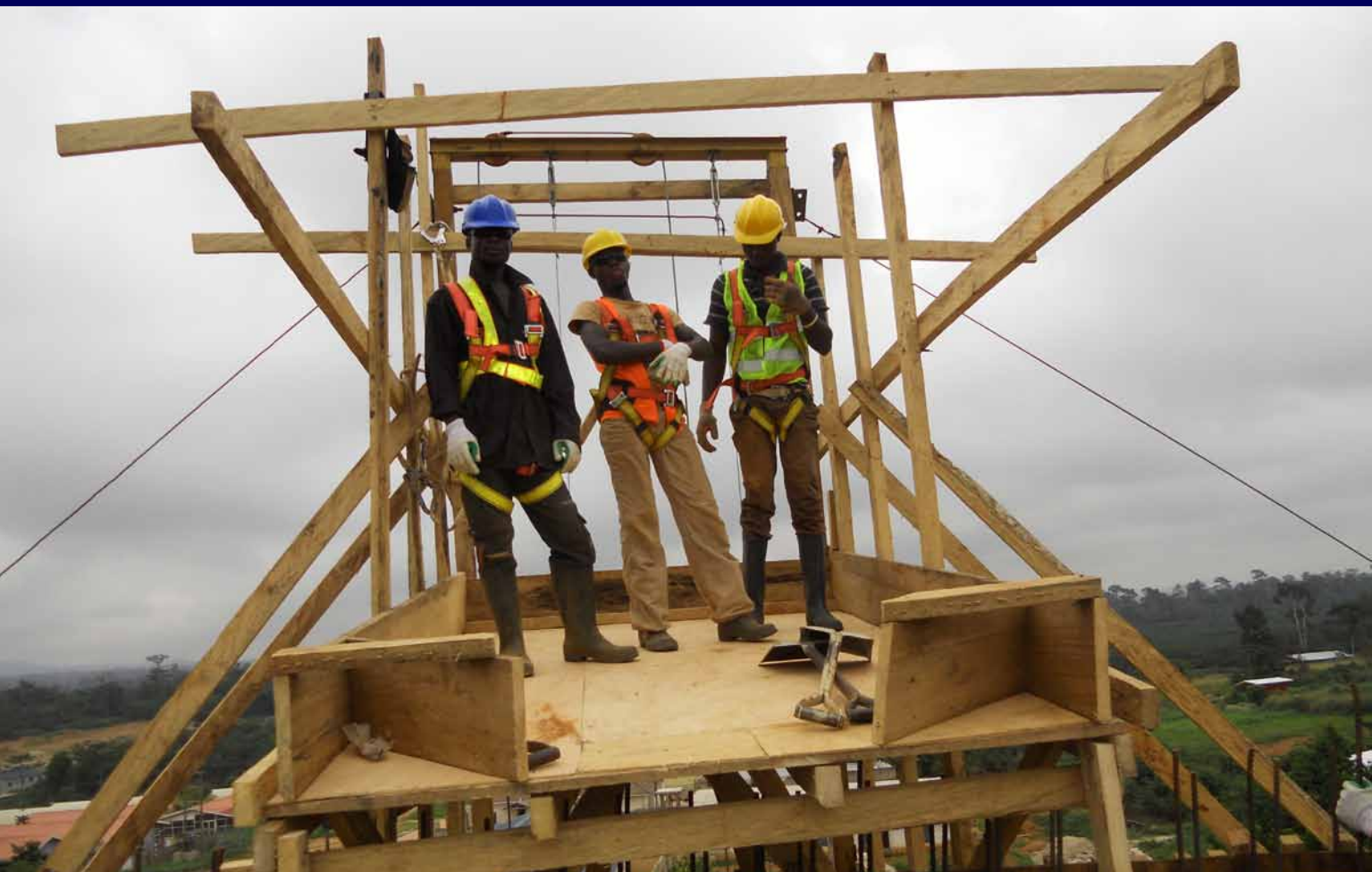


NEWMONT GHANA GOLD

SETTING AN EXAMPLE





SETTING AN EXAMPLE

George Brakoh, manager of local supplier and contractor development, explains how the economic legacy left behind by Newmont Ghana Gold will benefit the local community for years to come

WRITTEN BY: **WILL DAYNES**
RESEARCH BY: **RICHARD HALFHIDE**

Pouring concrete



Boasting economic growth rates that have consistently topped six percent in recent years, Ghana is universally lauded as being an emerging African economic success story. A peaceful and stable democratic nation, Ghana continues to make strong progress towards its goal of becoming a middle-income country by 2020.

Like many companies currently based in the country, the Newmont Mining Corporation has found Ghana to be a land of great opportunity and one where it can expand its own global reach. One of the largest and oldest gold producers, the Newmont Mining Corporation also holds significant assets in North and South America, Australasia and the Far East, employing 43,000 staff and contractors worldwide.

In Ghana, Newmont's African activities are presently centred on its Ahafo operation, located beneath an area inhabited by around 1700 households. Newmont's staff made great strides in successfully resettling the affected community, compensating residents financially and providing them with new homes, schools and titles to land that they were previously not allowed to own.

Today the mine supports the employment of 1800 people directly employed by Newmont and provides work for a further 3000 contractors on site. As the mine has continued to develop, its focus has turned to Newmont's Ahafo Linkage Programme, a three year project designed

Surface Drilling Equipment



Atlas Copco Ghana Ltd.
+233(0) 302 774512
info.ghana@gh.atlascopco.com
www.atlascopco.com

Sustainable Productivity





ATLAS COPCO GHANA LIMITED

Innovating for sustainable productivity

Atlas Copco is an industrial group with world-leading positions in compressors, construction and mining equipment, power tools and assembly systems. The Group delivers sustainable solutions for increased customer productivity through innovative products and services. Founded in 1873, the company is headquartered in Stockholm, Sweden and has a global reach spanning more than 170 countries. In 2011, Atlas Copco had about 33,000 employees.

The Group's vision is to become and remain First in Mind –First in Choice® for its customers and other stakeholders. Its organizational culture is based on three core values which are interaction, commitment

and innovation. These values guide its people towards a consistent position in offering the best of products and services to customers and other stakeholders.

Atlas Copco Ghana Limited started operating at Obuasi, Ghana in 1992 with the goal of supporting the country's mining industry. Its regional responsibility covers Nigeria, Liberia, Sierra Leone and French speaking West Africa. The company currently has three branches strategically positioned in Accra, Obuasi and Tema.

Atlas Copco Ghana operates through a number of divisions within three main business areas; Mining and Rock Excavation Technique, Compressor Technique and Construction Technique.

The Mining and Rock Excavation Technique business area markets and services underground drilling rigs for tunneling and mining applications, surface drilling rigs, loading equipment, exploration drilling equipment as well as the related aftermarket and drilling consumables, all designed to help achieve high productivity with moderate maintenance costs.

The Compressor Technique business area provides industrial compressors, gas and process compressors and expanders, air and gas treatment equipment and air management systems. It has a global service network and offers specialty rental services. Compressor Technique innovates for sustainable productivity in the manufacturing, oil and gas, and process industries.

The Construction Technique business area provides construction and demolition tools, portable compressors, pumps and generators, lighting towers, road construction and compaction and paving equipment. It offers service through a global network. Construction Technique innovates for sustainable productivity in infrastructure, civil works and road construction projects.

The company can also boast of a well-defined aftermarket (service) team which offers expert service and training to customers to increase their production capacities. In enhancing its service offering, the company has recently established a new training facility at Obuasi to provide a central place for employees and customers to attend training seminars and courses under the "Master Driller Program" which is a by-product of the Atlas Copco Performance Services initiative. Atlas Copco Ghana does more than meeting equipment needs; it goes a mile further to help solve customer problems by providing consumables, spares and solutions for customer operations.

The company continuously strives to be a good corporate citizen and as part of its corporate social responsibilities, immense contributions have been made towards the sustainable development of the Obuasi community. Atlas Copco Ghana has also been involved in various charity and community engagement projects in Ghana.

It remains committed to **sustainable productivity**.

T. +233 0302 774512

Info.ghana@gh.atlascopco.com





to increase procurement from local suppliers.

“Over the course of the last six months,” explains George Brakoh, manager of local supplier and contractor development for Newmont Ghana Gold, “we have successfully completed the first phase of this programme. Today we find ourselves embarking upon the next stage of our strategy, which will focus on promoting the mentoring of small business by some of our larger contractors.”

A joint agreement already exists between



Completed houses

Newmont Ghana Gold and several of its contractors that states that they will work towards providing small local businesses with the type of support that will give

Need a consulting firm with deep technical understanding, cross-disciplinary thinking and a passion to help clients across Africa?

Just Ask Golder.

Golder Associates is a respected, employee-owned, global company providing consulting, design and construction services in the earth, environment and related areas of energy. We assist our mining, oil & gas and industry clients to build vital infrastructure, develop and implement projects with sustainability in mind.

Engineering Earth’s Development, Preserving Earth’s Integrity

Offices across South Africa, Botswana, Ghana, Guinea and Mozambique.
Ghana office +233 302 978 819 | mail@golder.co.za | www.golder.com



GOLDER ASSOCIATES



Golder Associates’ involvement in Newmont Gold Ghana Limited’s Ahafo Amoma project began during stage three and involved the design, engineering and construction of a large majority of the infrastructure related to the goldbearing, open-cast pit.

From the outset, Golder engineers added value by determining more efficient ways of setting up the project, whereby they reviewed and optimised NGGL’s initial design concepts.

Included in the scope of work was the design, engineering and construction of an 8.7 km haul road and associated infrastructure; the waste rock dump; the sedimentation control structures and associated controlled outlet structure.

The site’s secluded location, extreme topography and adverse weather conditions presented Golder with numerous challenges,

such as logistics, water management, sedimentation control and security. Golder managed these challenges by thinking outside the box, which involved extensive research and inventive in-house engineering, which well exceeded client expectations.

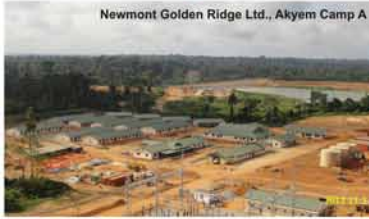
Golder handed the project over to NGGL US\$9-million under budget, three months before schedule, and with an exemplary safety record of no reported incidents.

Golder’s ‘above and beyond’ work ethic and quality engineering and delivery of the Ahafo Amoma project, enabled NGGL to begin operations at the mine three months ahead of the expected operational date.

cfell@golder.co.za
www.golder.com

CONSAR LIMITED

Building a Civil Engineering Contractors MOTTO: "Our Works Speak For Us"



Ball and Sag Mill, Akyem



Tamale Teaching Hospital

CONSAR LIMITED, a Building and Civil Construction Company in Ghana was founded in 1983 and commenced business in 1984. For 28 years of Civil and Engineering works, we believe that growth is aided by quality work and therefore we are determined to leave no stone unturned in our quest not only to deliver quality work, but also work within budget, and on time. Currently, we have been awarded major contracts in Ghana which are ongoing.

HEAD OFFICE:

Plot No. 11, Asokwa Industrial Area, Kumasi
 P. O. Box 1965, Kumasi, Ghana.
 Tel.: (+233) 032 2023186, (+233) 032 202559
 (+233) 032 2026900
 Fax: (+233) 032 2027174
 E-mail: admin@consarltd.com
 Website: www.consarltd.com

BRANCHES:

Tamale – Tel.: (+233) 037 2023732
 Fax: (+233) 037 2023732
Accra – Tel.: (+233) 030 2813453
 Fax: (+233) 030 2813454



Christian Service University College



GLAHCO Shopping Mall at Osu

them the opportunity to grow. Meanwhile, a similar mission being undertaken at Ahafo involves a drive to create more private-public sector partnerships and increase the level of dialogue between the two sectors.

“Most of the time,” Brakoh continues, “what we find is that the two sectors tend not to understand one another. What we want to do is create a scenario where the two sides can connect with one another. We believe that this will ultimately create a more level business environment that will allow everyone to grow more effectively.”

What the company is equally keen to ensure is that a legacy of economic stability and growth remains long after the mine has ceased operations. One of the ways it plans to achieve this is through the strengthening of regional agribusiness. “We believe the environment around the mine provides excellent economic opportunities,” Brakoh enthuses, “and we want it to remain that way even when our own presence diminishes.”

CONSAR

Between July 2004 and June 2006 Consar Limited demonstrated our performance in building and civil engineering works when we were awarded the construction of a new ball/sag mill wet plant including 49 senior and junior staff houses at Ahafo for Newmont Ghana Gold Limited. Our quality and standard of workmanship, coupled with a good working relationship with Newmont, earned us another opportunity to construct a new ball/sag mill wet plant together with 160 room accommodation at Akyem, which is nearing completion.

Working with Newmont Ghana Gold has tremendously improved our safety and environmental practices in our construction business over the period.

www.consarltd.com



Stone pitching works

BE Weekly
 Because a month is a long time to wait...
 Your weekly digest of business news and views
www.bus-ex.com

3,000

 Contractors that the mine provides work for



Top soil spreading by Gyifoss



Newmont is committed to local sourcing



Grass planting by Nyame Adom Twum

“TODAY WE ARE FOCUSED ON PROMOTING THE MENTORING OF SMALL BUSINESS BY SOME OF OUR LARGER CONTRACTORS”

What we are striving to do is encourage more successful local businesses to invest some of their profits into various agribusinesses.”

On the national front, Newmont Ghana Gold is at the forefront of efforts to develop local content agreements across the country. These efforts have the full support of the Ghanaian government

who have brought in local content laws that require mining companies to submit local procurement plans, based on a list of items.

Working in collaboration with the Ghana Chamber of Mines, Newmont has thus far identified 28 different product categories that it believes can be sourced

locally. Together with a number of specialist consultants, the company has been carrying out in-depth analysis of these products and the companies that manufacture them in the country.

“Based on the progress made to date,” Brakoh says, “we have proposed that a programme focused on driving local content agreements begins in early 2013. What we believe we can achieve in the short-to-medium term is to attract an increasing number of foreign investors into the country, with the ultimate aim being to encourage them to partner with local businesses. This is all part of a long-term strategy that we have mapped out

that we believe will lead to a situation where international manufacturers will be able to utilise Ghanaian businesses to establish their own local operations.”

Newmont Ghana Gold will certainly be hoping that its local content programme meets with the same success and approval as some of its other initiatives. In early October, the company was commended by the country’s Asantehene, Otumfuo Osei Tutu II, for establishing the Newmont Ahafo Development Foundation, an enterprise that seeks to ensure the sustainable development of its host communities.

Otumfuo praised the company for

1,800

.....
People directly employed at Ahafo

the cordial working relationship it has maintained with local communities and reaffirmed his belief that if all other mines could emulate the example set by Newmont, the lives of mining communities across Ghana and Africa as a whole would improve by leaps and bounds.

“Together with our partners in the local community we have achieved a lot at Ahafo,” Brakoh says, “and the results are there for all to see. What I, like many others, now believe is that we have the potential to achieve something just as big on a national scale. Thanks to Ahafo there are numerous examples of local businesses that today have the potential to grow further thanks to opportunities that didn’t exist before and we are passionate about making such opportunities available on a national level. We are under no illusion that this will pose significant challenges, but with the best efforts of everyone involved we feel that what happens in Ghana will set an excellent example that other countries can follow.” **BE**

The local content programme at Ahafo has met with great success

For more information about Newmont Ghana Gold visit: www.newmont.com/africa



NEWMONT GHANA GOLD

www.newmont.com/africa

Produced by:

ACHIEVING BUSINESS EXCELLENCE ONLINE

BE Business Excellence

www.bus-ex.com